

# HOW TO REVIVE ZOMBIE GEORGE IN FOUR EASY STEPS



1



Photocopy the page with the model. Alternatively download the PDF from [www.marshallalexander.net](http://www.marshallalexander.net) and print it out.

2

Cut out the model and score the foldlines with the back of a knife. Also cut out the glasses, you will need those as well.

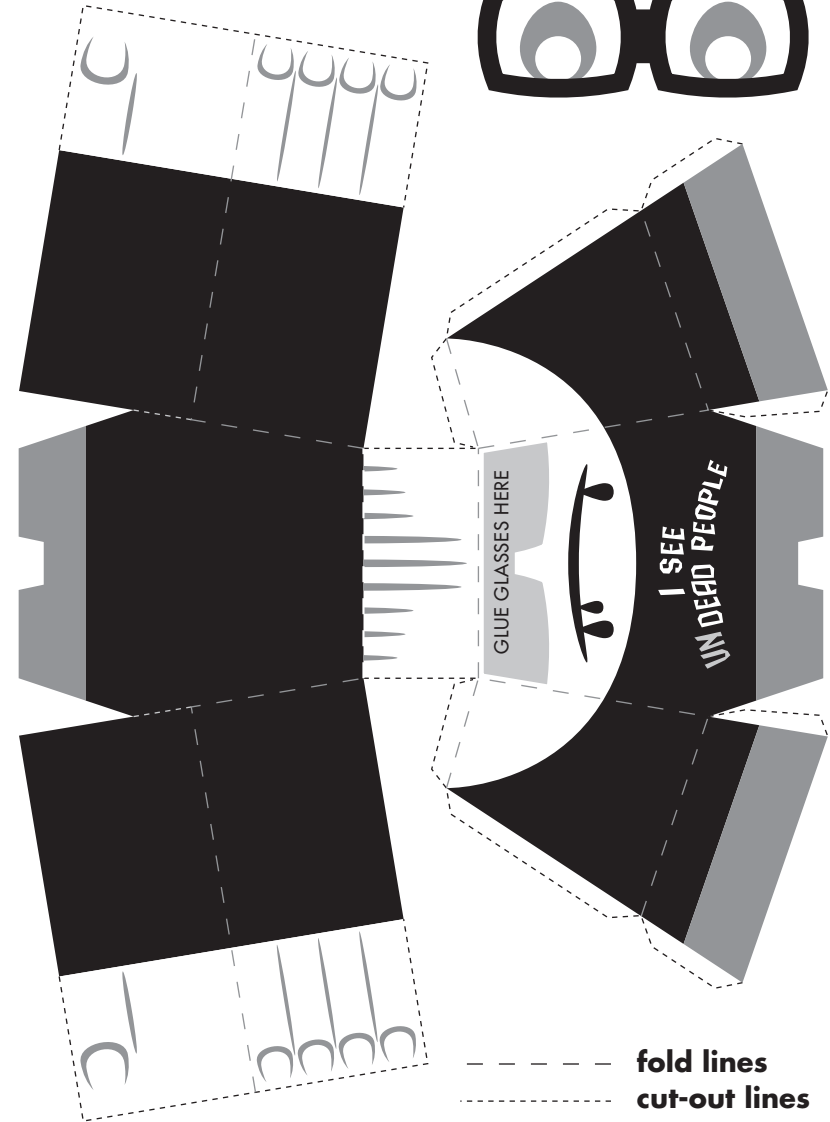


3

Put glue on the inside of arms and fold the front and back together to create the arms. Fold the model along the foldlines. Put glue on the flaps and stick the model together.

4

As a final step, glue the separately cut-out glasses on his face to complete the task. You can keep the straight arms, but for a more menacing effect you can fold the hands a bit forward.



--- fold lines  
..... cut-out lines

## ZOMBIE GEORGE